

What's on

Summer events program

January – March 2012

*Bringing science to people...
... and people to science*



From the Director

Another sizzling summer rolls around and, for Adelaide, that means Fringe: the wonderful cavalcade of chaotic fun with events across the city to entertain, entice and titillate. The Science Exchange is proud to, once again, be a key venue for the Adelaide Fringe and, as you'll see here, there's lots with which to get involved.

Our long-time friend and mathematical magician Simon Pampena will be here and part of several events as well as comedian Timandra Harkness and stand-up mathematician Matt Parker, fresh from sell-out performances at the Edinburgh Festival Fringe. This promises to be a stellar season at the Science Exchange and we hope to see you here regularly!

Of course there is a more low key way of engaging with RiAus at the Science Exchange. Our bar is open to all every Friday night with a brief summer hiatus. We'll be starting up again in February 2012 and we open the doors at 5pm. It's a great way to finish your working week and start your weekend!

Dr Paul Willis Director, RiAus

If you're interested in the world around you, then RiAus is for you.

Housed in Adelaide's historic Science Exchange building, we're a place to learn, explore, network, and express ideas. Think of us as your resource for the latest and most topical science information. Our regular evening events are a refreshing alternative to a night in front of the TV, and they're usually free. You'll hear experts speak about up-and-coming science trends while you relax in the comfortable and intimate setting of our auditorium, with cabaret-style seating and bar.

If you miss an event, you can always catch up with one of our recordings online. If you are free on the night but can't make it to our venue, you can watch the livestream and join the online chat. We're passionate about bringing science to a wide audience, and are determined to maintain our place at the heart of the science community.

We offer something for all, including film and book club events, art launches, poetry readings, school holiday science and teachers' resources, as well as a host of special events tailored to our valued members.

The Science Exchange building is open to the public from Monday to Friday. Drop in to explore the heritage features, or visit our Gallery and let the latest science focused art exhibition challenge your perspective.

We're a not for profit organisation, and your support is vital to our continued growth as a thriving and dynamic science hub. Consider becoming an RiAus member. You'll be part of a unique community and have access to exclusive member benefits, while helping a great cause.

Friday 9 December–Thursday 19 January

Open Monday–Friday 10am–5pm

RiAus Adelaide Reef returns

FutureSpace Gallery, The Science Exchange

As a part of this year's SALA exhibition our Reef enjoyed a huge number of visitors so we have decided to reinstall a new configuration for the holiday season. The reef is a satellite of the worldwide Hyperbolic Crochet Coral Reef Project created by Margaret and Christine Wertheim of the Institute For Figuring in Los Angeles. It synthesises concerns for environmental degradation of our Great Barrier Reef and the mathematics of hyperbolic space to create deeply connected crafting communities.

Free



Monday 9 January–Thursday 19 January

Open Monday–Friday 10am–5pm

[Retro]²: unreal clothes for real cyclists

ThinkingSpace, The Science Exchange

RiAus will host an exhibition of cycling clothing unlike anything you've seen before. Retro-reflective clothing for the modern day cyclist is as much high fashion as high-vis, embodying art and technology and concerned with both flair and safety.

Free

In association with Bike Art Adelaide



Monday 16 January, 6:30–8pm

Under the helmet

The Science Exchange

Before the Santos Tour Down Under starts, join sports psychologists and elite professional cyclists for a fascinating discussion about how riders prepare mentally for a major stage race. Find out how their mental preparation affects their physical performance and injury risk, and just what they are thinking when they tackle a mountain climb.

Free, but booking required



Wednesday 18 January, 6–7:30pm

RiAus book club: *The wavewatcher's companion*

The Science Exchange

For our first book club of 2012 we will be reading the winner of the Royal Society's Winton Prize for Science books 2011, *The wavewatcher's companion* by British designer, author and founder of the Cloud Appreciation Society: Gavin Pretor-Pinney. Exploring waves in all their formats, from Mexican to electro-magnetic, this book uses straight-forward science to transform our perspectives on the everyday world.

Free, but booking required



Sunday 22 January, 11am–3pm

Family Fun Open Day – all ages welcome

Monday 23 January 10am–12noon and 1:30–3:30pm
most suitable for ages 8–10 years

Tuesday 24 January, 6–8pm – special adult session*

Wednesday 25 January 10am–12noon and
1:30–3:30pm most suitable for ages 10–13 years

School holiday science:

Scale Free Network's art–science lab

Thinking Space, The Science Exchange

These two hour art-meets-science workshops offer something for both scientifically-minded children and artistically-orientated students. Participants will gain a different perspective of the world around them using microscopic and projection techniques. Drawing and sculpting their observations, children will collaborate to produce a joint work of art. Lab coats, microscopes and art materials provided.

*Hands-on science-art isn't just for children. This special workshop is offered for teachers, scientists, artists – in fact anyone interested in exploring the intersection of science and art.

Limited workshop places. Free, but booking essential.



Wednesday 8 February, 6–7:30pm

RiAus film club: Donated to science

The Science Exchange

Donated to science is a documentary-style film following students at the Otago Medical School in New Zealand through their first year of medical school and, importantly, their first encounters with cadavers and human dissection.

Film club membership for six months \$10

RiAus members free, but booking required



Saturday 11 February, gates open at 10am

Science Outside the Square: Carnevale

Adelaide Showground, Wayville

Estelle Lazer at 3pm, Marcello Costa at 6pm

Drag yourself away from the food and drink at Carnevale to join Science Outside the Square for an exploration of Italian science. Find out the secrets of the Pompeii ruins and its inhabitants with Sydney archaeologist Estelle Lazer, and explore the brain with Adelaide neuroscientist Marcello Costa.

In association with Carnevale

Tickets available at the gate.

Adults \$12. Family pass (2 adults, 2 children) \$25.

Children 5–15yrs \$5, children under 5yrs free.

Pensioners/seniors/unemployed/students \$8

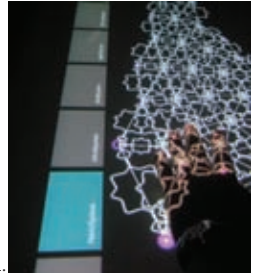
Half price entry 10am–1pm

Thursday 16 February, 6–7:30pm**Art, pattern and complexity: artists talk**

The Science Exchange

This exhibition explores analogies between art and science evident in the current resurgence of interest in pattern and complexity in contemporary art. These emergent tendencies, coming after a period of pared back minimalism, can be seen in paintings, drawings, multi-media and, above all, in art created using digital software and new media. Join us for a preview of the exhibition and hear from the artists about their works.

Free, but booking required



1.

Wednesday 22 February, 6–7:30pm**No-one is immune—the reality of organ donation**

The Science Exchange

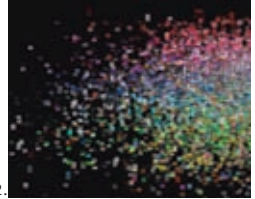
In recognition of DonateLife Week 2012, we'll explore the barrier that is the immune system. While it usually protects us from evil invaders, the immune system becomes a hindrance for organ transplantation. What is tissue matching all about? How does life change after an organ transplant? How can research make our immune systems accept these 'foreign' body parts?

This event is sponsored by the Organ and Tissue Authority.

Free, but booking required

**Friday 24 February****Opening night party, bar open from 6pm****Adelaide Fringe Festival 2012 at the Science Exchange**

Cuttlefish, daleks, angry mathematicians, disorder and chaos. All this and more, so join us for a drink after the Fringe Parade.



2.

This Fringe, the Science Exchange will transport you. Go back 150 years to Faraday's world, or journey to 2030 and see the future. Is time travel possible? Our band of Doctor Who fanatics will find out. We'll look at the mystery of the missing cuttlefish, talk about the odds of dying, and teach you how to use an algorithm to get famous. Join us for the art launch as maths takes centre stage in a new pattern and complexity exhibition. Finally, take a dip into our underwater wonderland, and see dancers twirl through a coral reef made of yarn. Entertain your brain this Fringe at the Science Exchange. Full event details listed overleaf.

Tuesday 28 February, 5:30–7:30pm**Art, pattern and complexity: exhibition launch**

FutureSpace Gallery, The Science Exchange

Join us for the launch of our visual art exhibition for Adelaide Fringe Festival 2012. The exhibition coincides with the launch of the March issue of Artlink magazine on the theme of art, pattern and complexity.

Free, but booking required

1. Tim Schork, MESNE, *Pricking*2. Tracy Cornish, *Plotting glitches*



Friday 2 March, 10am–3pm

Australian International Documentary Conference workshop

The Science Exchange

Now in its third incarnation, this workshop will examine the visual intersection between science and art. Featuring LA based artist-filmmaker, Rachel Mayeri, this workshop will explore new ways of communicating science through visual communication mediums. This high level forum is for research scientists, artists and factual filmmakers.

In association with the Australian International Documentary Conference.

Free, but booking required

Thursday 22 March, 6–7:30pm

Super fractals

Michael Barnsley

The Science Exchange

Van Gogh said that an artist should 'ignore the obvious and exaggerate the essential'. Fractal homeomorphisms enable us to do just that! The beautiful world of fractal geometry can not only be found in nature: from the shape of a shoreline to the curl of a fern frond, fractals can also be used to transform pictures of nature, and mathematician Michael Barnsley will demonstrate the intriguing images that result.

Free, but booking required

Wednesday 28 March, 6–7:30pm

RiAus book club: *Flowers for Algernon*

The Science Exchange

This month's book selection is a multi award-winning classic work of speculative fiction voted for by our book club members: *Flowers for Algernon* by Daniel Keyes. This story allows us to peek into the diary of Charlie, who has been subject to a medical experiment to boost his intelligence. If someone offered you the promise of increased IQ, would you do it? Join us to discuss this novel.

Free, but booking required

Thursday 29 March, 6–7:30pm

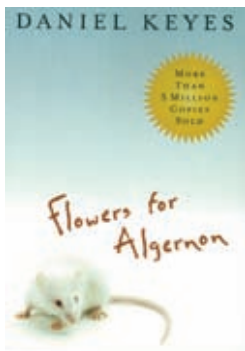
Science behind the headlines

Paul Willis

The Science Exchange

Join us as we delve into the science underpinning a recent news story. With a panel of experts and representatives of the media, Paul Willis will guide a discussion of the Science Behind the Headlines. Keep an eye on the RiAus website for updates on the topic to be covered.

Free, but booking required



FREE RANGE SCIENCE

INFORMATION W: freerangescience.org.au

Free Range Science brings you a jam-packed summer program. We will visit local festivals and events around regional Victoria with fun, interactive and family-friendly offerings.



To see what's coming up or browse past events, visit **W:** freerangescience.org.au.



The SCIENCE EXCHANGE

VENUE HIRE ENQUIRIES

For professional events in a central location, the landmark Science Exchange building resonates with history. Formerly the Adelaide Stock Exchange, the building has been stunningly refurbished and retains many of its original features. Inside there are five unique spaces, ranging from heritage to contemporary with services, facilities and technology for your conference, product launch, meeting, wedding or special event.



Contact: Bianca Attard
Venue Hire Manager
Email: venuehire@riaus.org.au
Telephone: 08 7120 8600

ENTERTAIN YOUR BRAIN AT THE SCIENCE EXCHANGE DURING ADELAIDE FRINGE FESTIVAL 2012

Saturday 25 February, 6:30pm and Sunday 26 February, 2pm

Science of fiction: Doctor Who

The Science Exchange

Doctor Who. Science? Fiction? Both? We bring together a group of Doctor Who fanatics who just happen to be a comedian, two physicists and an astrophysicist for a light hearted look at the science of fiction. Find out just how much science there is in Doctor Who.

General (GA). 90 minutes.

\$15 adults, \$10 concessions/RiAus members

Wednesday 29 February–Wednesday 16 May

Monday–Thursday 10am–5pm, Friday 10am–8pm and during

RiAus events

Art, pattern and complexity

FutureSpace Gallery, The Science Exchange

Tracy Cornish, Caroline Durré, Gregor Kregar, Jon McCormack, Natalie McLeod, Kerrie Poliness, Tim Schork and MESNE, Sam Songailo.

Curator: Margot Osborne

Artists explore ideas about pattern and complexity that draw on the latest scientific and mathematical theories. Their paintings, installations and interactive artworks feature mesmerising optical patterns and digitally generated complex behaviour.

Free

Thursday 1–Saturday 3 March, 7:30pm

Simon Pampena in

The fame algorithm: maths for what we really want

The Science Exchange

What's maths been good for? Physics? Chemistry? Economics?

BORING! Finally maths is being used for stuff that matters... Popularity!

Entertainment! LOLcats! Simon Pampena, the angry mathematician,

is your guide on maths' modern adventure to the dark side.

'Pampena makes maths more exhilarating than it's ever been in my life.'

- Chortle. Parental guidance. 60 minutes.

\$18 adults, \$14 concessions/RiAus members

Thursday 1–Saturday 3, Thursday 8–Saturday 10 and

Wednesday 14–Saturday 17 March, 6:30pm

Sepia

The Science Exchange

Divers. Marine scientists. A mining company and a desalination plant.

Thousands of Giant Australian Cuttlefish gone missing off the coast of

Whyalla. A new play by Emily Steel, from the writer and presenter of

Rocket Town (4 stars, *'wonderful script'*, The Advertiser), winner of the

Adelaide Fringe 2011 inSPACE:development award.

Parental guidance. 60 minutes.

\$20 adults, \$15 concessions/RiAus members

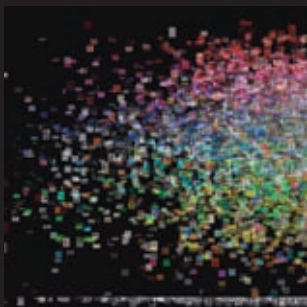
BOOKINGS: ADELAIDFRINGE.COM.AU/1300 374643



LIVE EVENT

SCIENCE OF FICTION: DOCTOR WHO

Saturday 25 February, 6:30pm and
Sunday 26 February, 2pm



ART

ART, PATTERN AND COMPLEXITY

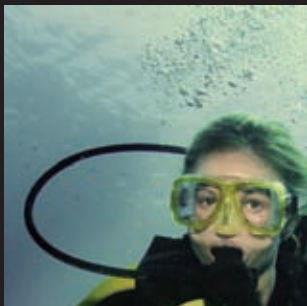
Wednesday 29 February–Wednesday 16 May
Monday–Thursday 10am–5pm,
Friday 10am–8pm and during RiAus events.



COMEDY

SIMON PAMPENA IN THE FAME ALGORITHM:
MATHS FOR WHAT WE REALLY WANT

Thursday 1–Saturday 3 March, 7:30pm



THEATRE

SEPIA

Thursday 1–Saturday 3, Thursday 8–Saturday 10
and Wednesday 14–Saturday 17 March, 6:30pm

BOOKINGS: [ADELAIDFRINGE.COM.AU/1300 374643](http://ADELAIDFRINGE.COM.AU/1300374643)



COMEDY

**YOUR DAYS ARE NUMBERED:
THE MATHS OF DEATH**

Tuesday 6–Saturday 10 March, 8pm



THEATRE

FARADAY'S CANDLE

Thursday 8–Saturday 10 March, 7:15pm



THEATRE

CITY FARM

SCHOOL PERFORMANCE at The Science Exchange

Monday 12–Friday 16 March, 10am and 1pm

at Adelaide Showground, Ridley Centre

Saturday 17–Sunday 18 March, 1pm and 2:30pm

DANCE

RIPPLE

Friday 16–Saturday 17 March, 7pm and 8:30pm

SPECIAL SCHOOL WORKSHOP /PERFORMANCE

Monday 19 March, 10:30am and 12:30pm



BOOKINGS: ADELAIDFRINGE.COM.AU/1300 374643

ENTERTAIN YOUR BRAIN AT THE SCIENCE EXCHANGE DURING ADELAIDE FRINGE FESTIVAL 2012

Tuesday 6–Saturday 10 March, 8pm

Your days are numbered: the maths of death

The Science Exchange

Drinking is good for you. Being single is bad for you. You have a 0.000043% chance of dying during this show. After sell-out performances at the Edinburgh Festival Fringe, comedian Timandra Harkness and stand up mathematician Matt Parker will make sure you die laughing.

'*Exponentially Funny*'. General (GA). 45 minutes.

\$20 adults, \$15 concessions/RiAus members

Thursday 8–Saturday 10 March, 7:15pm

Faraday's candle

The Science Exchange

Over 150 years ago, Michael Faraday saw beauty and wonder in the chemistry of a candle. Society has changed, technology has advanced, language has evolved, but the phenomena underpinning a candle remain constant. Built around one man's genius for observation, Faraday's Candle explores natural phenomena and the processes of science. General (GA). 50 minutes.

\$20 adults, \$15 concessions/RiAus members

Friday 16–Saturday 17 March, 7pm and 8:30pm

Ripple: Move Through Life Dance Company

The Science Exchange

Set amongst a vivid coral reef made from crocheted yarn, the dance echoes the fascinating curves of coral, the intricacy of crochet and the power of community. Enter the submerged world and feel the ripple of energy as dancers move past you. Celebrating the intersection of art, mathematics and handicraft. General (GA). 45 minutes.

\$15 adults, \$10 concessions/RiAus members

City Farm

Monday 12–Friday 16 March, 10am and 1pm

The Science Exchange

Saturday 17–Sunday 18 March, 1pm and 2:30pm

Ridley Centre, Adelaide Showground

It's 2030 and the air is different. Nature is suffering. Technology has allowed for everything to be replaceable but can we actually replace everything electronically... grass, flowers, trees, wind, sun... earth? Follow the struggles of Jed and Melaleuca, a farmer and his tree.

Suitable for 8+ years. 45 minutes.

\$10 adults, \$7 children

School group of 15 students and over: \$5 students, teachers free

SPECIAL SCHOOL WORKSHOPS AND PERFORMANCES

Wednesday 7, Tuesday 13 March, 11am

SEPIA at the Science Exchange

\$10 students, teachers free.

Thursday 8 March, 1:30pm (years 10–12)

YOUR DAYS ARE NUMBERED: THE MATHS OF DEATH at the Science Exchange

\$10 students, teachers free.

Monday 12–Friday 16 March, 10am and 1pm

CITY FARM at the Science Exchange

School group of 15 students and over: \$5 students, teachers free.

Monday 19 March, 10:30am and 12:30pm

RIPPLE, Move Through Life Dance Company at the Science Exchange

\$5 students, teachers free.

BOOKINGS: ADELAIDFRINGE.COM.AU/1300 374643

SUPPORT US AND GET INVOLVED

RiAus relies upon the generosity of its **members** and **supporters** in order to offer innovative science programs. Such vital support is tax deductible, as the RiAus has Deductible Gift Recipient status. There are many ways that you can help support the creation of stimulating programs which raise awareness and promote debate about contemporary issues in science. Become an RiAus member, a volunteer, attend events or watch video talks online from past events or live streamed. Join us for a drink in the Science Exchange bar on Fridays from 5pm.

For information about joining our unique community of members, please visit our website **W: riaus.org.au** or **E: members@riaus.org.au**.

For information about corporate support, making donations or leaving a gift in your Will, please contact RiAus Development Manager, Kathy Granger.

E: kgranger@riaus.org.au **T: 08 7120 8600.**



RiAus
The Science Exchange
Exchange Place, Adelaide
SA 5000
T: 08 7120 8600
E: science@riaus.org.au
W: riaus.org.au

Follow RiAus on Facebook and Twitter

W: facebook.com/riaus

W: twitter.com/Ri_Aus

Sign up online for our email newsletter

W: riaus.org.au



Thanks to RiAus Foundation Partners:



This is a publication of the Royal Institution of Australia (RiAus). Printed on recycled paper made from post consumer waste. The Royal Institution of Australia Inc is a Charitable Institution and is a Deductible Gift Recipient (DGR).

